



Vacation Care

Monday 1st July - Monday 22nd July

Daily Fee \$62.00 (6:30am - 6:00pm)

Please ensure you have updated your details at MyGov for Vacation Care and you have accepted your enrolment. These details need to be updated every 8 weeks.

For information on absent days please visit:

<https://www.humanservices.gov.au/individuals/services/centrelink/child-care-subsidy/how-manage-your-payment/if-your-child-absent-from-child-care>

Child/ren Name: _____

Parent/Carer Name: _____

Parent/Carer Signature: _____

Date: _____

Total Excursion Fees PAID: \$ _____

Cessnock Multipurpose Children's Centre uses the DEBIT SUCCESS fee payment system.

Fees are direct debited from your account at the end of the week being Friday at 10am.

Please check with your bank for processing times.

Additional Excursion Costs will be added to your account and be deducted at the time of making your booking. Excursion positions cannot be reserved without a permission slip and fees paid.

CMCC Excursion Policy:- "Positions on excursions are limited.

Bookings will be taken in the order they are received with a signed permission slip and payment is processed.

Refunds will only be given where the position on the excursion is replaced and no cost to CMCC is incurred."



Educating and Caring for Children since 1963

5 Dudley Street, Cessnock NSW 2325
Ph: 02 4990 2687 Email: admin@cmcc.nsw.edu.au
ABN: 81 002 428 908

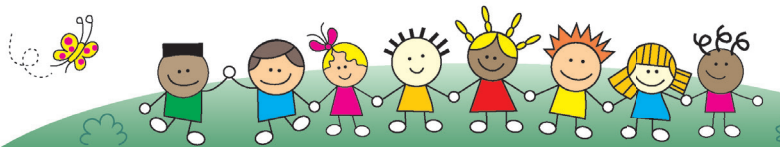
www.cmcc.nsw.edu.au



Cessnock Multipurpose Children's Centre

PLEASE MARK THE BOXES ON THE DAYS YOUR CHILD WILL BE ATTENDING

	Monday 1st July	Tuesday 2nd July	Wednesday 3rd July	Thursday 4th July	Friday 5th July
	OOSH Regular Services Plus Vacation Care for St Philips	OOSH Regular Services Plus Vacation Care for St Philips	OOSH Regular Services Plus Vacation Care for St Philips	OOSH Regular Services Plus Vacation Care for St Philips	OOSH Regular Services Plus Vacation Care for St Philips
Hours Attending Please indicate arrival and departure times	(e.g. 8.30am - 5.00pm)	(e.g. 8.30am - 5.00pm)	(e.g. 8.30am - 5.00pm)	(e.g. 8.30am - 5.00pm)	(e.g. 8.30am - 5.00pm)
	Monday 8th July	Tuesday 9th July	Wednesday 10th July	Thursday 11th July	Friday 12th July
	Excursion Glendale Cinemas 10.30am - 3pm \$18.00 <input type="checkbox"/>	Excursion NAIDOC Fun Day 10am - 4pm \$10.00 <input type="checkbox"/>	Vacation Care	Compulsory Incursion Balloon Workshop 10.30 - 11:30am \$7.50 <input type="checkbox"/>	Vacation Care
Hours Attending Please indicate arrival and departure times	(e.g. 8.30am - 5.00pm)	(e.g. 8.30am - 5.00pm)	(e.g. 8.30am - 5.00pm)	(e.g. 8.30am - 5.00pm)	(e.g. 8.30am - 5.00pm)
	Monday 15th July	Tuesday 16th July	Wednesday 17th July	Thursday 18th July	Friday 19th July
	Vacation Care	Excursion Tree Tops Park 9.30 - 3.30pm \$28 <input type="checkbox"/> \$35 <input type="checkbox"/>	Compulsory Incursion Bricks for Kids 10am - 12:30am \$7.50 <input type="checkbox"/>	Excursion Maitland Gaol 10am - 4pm \$15.00 <input type="checkbox"/>	Vacation Care
Hours Attending Please indicate arrival and departure times	(e.g. 8.30am - 5.00pm)	(e.g. 8.30am - 5.00pm)	(e.g. 8.30am - 5.00pm)	(e.g. 8.30am - 5.00pm)	(e.g. 8.30am - 5.00pm)
	Monday 22nd July	Tuesday 23rd July	Wednesday 24th July	Thursday 25th July	Friday 26th July
	OOSH Regular Services Plus Vacation Care for those who need it	OOSH	OOSH	OOSH	OOSH
Hours Attending Please indicate arrival and departure times	(e.g. 8.30am - 5.00pm)	Before and After School Care	Before and After School Care	Before and After School Care	Before and After School Care



Educating and Caring for Children since 1963

5 Dudley Street, Cessnock NSW 2325
Ph: 02 4990 2687 Email: admin@cmcc.nsw.edu.au
ABN: 81 002 428 908

www.cmcc.nsw.edu.au